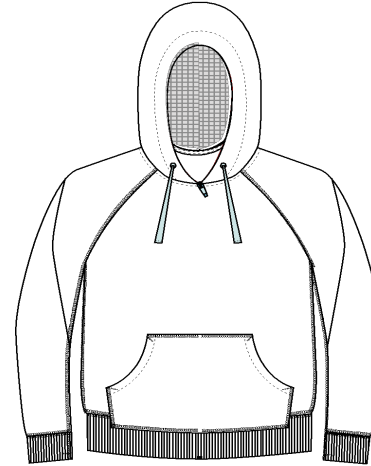


## Comfort Colors

Date: April 2010 revised

Style: 1 1565



**DESCRIPTION: L. RAGLAN SLV WITH KANGAROO POCKET**

**FABRIC 1: FLEECE - 80% COTTON - 20% POLYESTER - PIGMENT DYE**

**FABRIC 2: RIB 1X1 WITH LYCRA**

**FABRIC 3: THERMAL (LINED HOOD)**

**CONSTRUCTION DETAILS: SIDE SEAM BODY, ARMHOLES SEAM, AND POCKET ARE RAW EDGE 3 NEEDLE 5 THREADS COVERSTITCH**

### AFTER DYE - GARMENT FINISHED MEASUREMENTS

SIZES		S	M	L	XL	2XL	3XL
1	BACK LENGTH (F. H. S. P.)	28 1/4	29 1/4	30	31	32	33
2	CHEST @ 1" below armhole	46	48	50	52 1/2	55 1/2	58
3	SWEEP CIR. AT RIB EDGE	38	40	42	44 1/2	47 1/2	50
4	FRONT RAGLAN HEIGHT from hsp	2	2 1/4	2 1/2	2 3/4	3	3 1/4
5	BACK RAGLAN HEIGHT from hsp	1 1/2	1 3/4	2	2 1/4	2 1/2	2 3/4
6	ARMHOLES DEPTH.: HSP TO UNDERARM SEAM 90 SQUARED	10 1/2	11	11 1/2	12	12 1/2	13
7	NECK WIDTH (SEAM TO SEAM) (HSP TO HSP)	8 1/2	8 3/4	9	9 1/4	9 1/2	9 3/4
8	BACK NECK DROP (FROM HSP TO SEAM)	3/4	3/4	3/4	3/4	3/4	3/4
9	FRONT NECK DROP (FROM HSP TO SEAM)	3 1/2	3 3/4	4	4 1/4	4 1/2	4 3/4
10	LONG SLEEVE LENGTH (FROM NECK SEAM INCL. CUFF)	29 1/2	30 1/4	31	31 3/4	32 1/2	32 3/4
11	BICEP @ 1"below armhole	20 1/2	21 1/4	22	23	24 1/4	25 1/4
12	SLEEVE OPENING (MEASURE 2" UP FROM CUFF SEAM)	10 1/2	11	11 1/2	12	12 1/2	13
13	SLEEVE OPENING AT RIB EDGE	8	8 1/2	9	9 1/2	10	10 1/2
14	CUFF HEIGHT	2 1/2	2 1/2	2 1/2	2 1/2	2 1/2	2 1/2
15	BOTTOM HEIGHT	2 1/2	2 1/2	2 1/2	2 1/2	2 1/2	2 1/2
16	POCKET HEIGHT AT CENTER FRONT	8 3/4	8 3/4	8 3/4	8 3/4	9	9
17	POCKET WIDTH AT TOP	9 1/2	9 1/2	9 1/2	9 1/2	10	10
18	POCKET WIDTH AT BOTTOM	13 3/4	13 3/4	13 3/4	13 3/4	14 1/4	14 1/4
19	POCKET SIDE HEIGHT	3 1/2	3 1/2	3 1/2	3 1/2	3 5/8	3 5/8
20	POCKET OPENING (measure aolong curve)	6	6	6	6 1/4	6 1/2	6 1/2
21	HOOD LENGTH	15	15	15	15	15	15
22	HOOD WIDTH	11	10 1/2	11	11 1/2	12	12 1/2
23	HOOD TUNNEL WIDTH	1 1/4	1 1/4	1 1/4	1 1/4	1 1/4	1 1/4
24	GROMMET PLACEMENT F. CF NECK SEAM TO CENTER OF GROMMET	1 1/2	1 1/2	1 1/2	1 1/2	1 1/2	1 1/2
25	DRAW CORD LENGTH	40	40	42	42	44	44